

CURVE KING - R

NATURAL STATIC RIDGE MOUNTED VENTILATORS

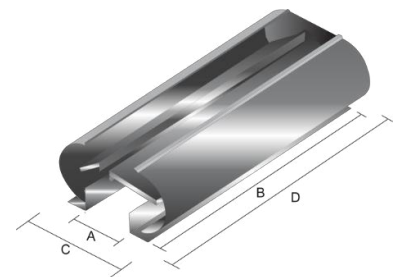
The Curvent Curve King-R is a ridge mounted natural static ventilator. The patented curved sides enhance the coefficient capabilities of the ventilator and provides appealing aesthetic. The Curvent Curve King will ventilate hot stale air within the building which is then replaced with cool fresh air through fixed louvres and other openings at low level, vastly improving indoor air quality. The ventilator is designed to fit any roof profile.

The ventilator is manufactured using Computerized Numeric Control machines, eliminating manufacturing flaws. The ventilator is transported in knock-down format to protect it against transit damage. The ventilator features a unique user friendly "Clip-On" installation system allowing fast and easy installation procedures that will reduce installation time and cost. This ventilator is renowned for its extremely robust construction. Its continuous natural ventilation capabilities and no maintenance makes it a cost-effective system to naturally ventilate any building. The flowing curved lines of the ventilator remains the first choice with architects, engineers and specifiers.

Ridge Mounted Model Type	CK300RC	CK450RC	CK600RC	CK750RC
Aggregate Base Throat Area	0.68m ²	1.03m ²	1.37m ²	1.71m ²
Free Measured Throat Area (Av)	0.61m ²	0.69m ²	0.79m ²	1.21m ²
Aggregate Base Throat Dimensions (AxB) in mm	300W x 2280L	450W x 2280L	600W x 2280L	750W x 2280L
Overall Ventilator Dimensions (Cx D) in mm	810W x 2400L	1010W x 2400L	1210W x 2400L	1530W x 2400L
Purlin Spacing Required in mm	300	450	600	750
Mild Steel Mass (Kg)	22	27	37	43

SPECIFICATION PROCEDURE:

1. Select the Model in accordance with the ventilation requirements and roof purlin spacing
2. Select the ventilator material type (i.e. Aluminium, Chromadek or Galvanised)
3. Select any accessories required (i.e. Bird Guards, Burglar Bars)



EXAMPLE:

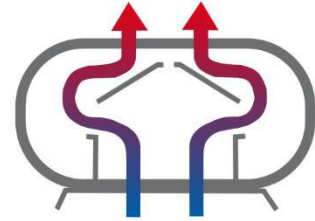
A specification for 7.9m² Free Measured Area (Av) natural ventilation required with 600mm roof purlin spacing available at the apex of the roof, manufactured in Chromadek material, colour Fish Eagle White, with bird guards would be:

CALCULATION:

Ventilation required / Free Measured Throat Area (Av)
 $1 \text{ } 7.9\text{m}^2 / 0.79\text{m}^2 \text{ (Av of the Curve King CK600RC)}$
 $= 10 \times \text{Curvent Curve King type CK600RC Ventilator Units (1 x Unit = 2400mm hence 10 x 2.4m)}$
 $= 24\text{m} \times \text{Curvent Curve King type CK600RC Ventilators}$

SPECIFICATION DESCRIPTION:

24m x Curvent Curve King type CK600RC ridge mounted natural static ventilators, Chromadek material, colour Fish Eagle White, with bird guards, installed in accordance with the manufacturer's detailed installation specifications.



Improve your indoor air quality...

Optional Accessories

Burglar Guards
Bird Guards
Roof Closures

Product Material Finishes

Galvanised
Aluminium
Powder Paint
Zincalume
Stainless Steel
Chromadek

Product Features

- Natural Day-To-Day Ventilation
- 1 Year Product Guarantee
- Extremely Cost-Effective
- Unique Clip-On System
- Suit most Roof Profiles
- Robust Construction
- Superior Aesthetics
- No Operating Cost
- No Maintenance