

DUAL PURPOSE SMOKE & HEAT VENTILATOR

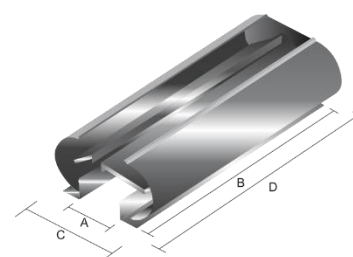
The Curvent Fire King R ventilator is a dual-purpose ridge mounted smoke and heat exhaust ventilator. The ventilator combines comfort with life safety. The ventilator offers permanent natural day to day ventilation of hot stale air within the building which is replaced with cool fresh air through fixed louvres and other openings at low level, vastly improving indoor air quality. In the event of fire, the ventilator doors automatically open on gravity to allow hot gasses to exhaust. This will aid in the buildings' structural integrity against building collapse. The smokeless layer of fresh air created at lower level creates safe evacuation passage for people and assist in firefighting disciplines.

The flowing curved lines of the ventilator enhance the coefficient capabilities and provides appealing aesthetics. The ventilator is manufactured using Computerised Numeric Control machines, eliminating manufacturing flaws. The ventilator is transported in knock down format to protect it against damage. The ventilator features a unique user friendly "Clip-On" installation system allowing fast and easy installation procedures that will reduce installation time and cost.

Ridge Mounted Model Type	FK450RC	FK600RC	FK750RC
Aggregate Throat Area (Fire Doors Open)	1.03m ²	1.37m ²	1.71m ²
Free Measured Throat Area (Av)	1.03m ²	1.37m ²	1.71m ²
Coefficient of Discharge (Cv)	0.68	0.68	0.68
Aerodynamic Free Area (AvCv)	0.72m ²	0.93m ²	1.16m ²
Aggregate Throat Dimensions (AxB) in mm	450W x 2280L	600W x 2280L	750W x 2280L
Overall Ventilator Dimensions (CxD) in mm	1010W x 2400L	1210W x 2400L	1530W x 2400L
Purlin Spacing Required in mm	450	600	750
Mild Steel Mass (Kg)	51	58	73

SPECIFICATION PROCEDURE:

1. Select the Model in accordance with the ventilation requirements and roof purlin spacing
2. Select the ventilator material type (i.e. Aluminium, Chromadek or Galvanised)
3. Select the fusible link activation temperature (Normally 93°C)
4. Select a secondary opening system if required (Normally 24V DC Electromechanical)
5. Select any accessories required (i.e. Bird Guards, Burglar Bars, Rain Detectors)



EXAMPLE:

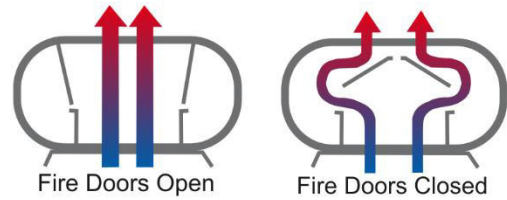
A specification for 13.7m² Free Measured Area (Av) fire ventilation required with 600mm roof purlin spacing available at the apex of the roof, manufactured in Chromadek material, colour Fish Eagle White, electromechanically operated, with bird guards would be:

CALCULATION:

Ventilation required / Free Measured Throat Area (Av) 13.7m² / 1.37m² (Av of the Fire King FK600RC)
= 10 x Curvent Fire King type FK600RC Ventilator Units (1 x Unit = 2400mm hence 10 x 2.4m)
= 24m x Curvent Fire King type FK600RC Ventilators

SPECIFICATION DESCRIPTION:

24m x Curvent Fire King type FK600RC ridge mounted multipurpose fire ventilators, Chromadek material, colour Fish Eagle White, with fusible link to activate at 93°C, complete with 24V DC electromechanically operating system and bird guards, installed in accordance with the manufacturers detailed installation specifications.



Dual purpose smoke & heat ventilator.

Optional Accessories

Burglar Guards
Roof Closures
Bird Guards
Electromechanical Operations

Product Material Finishes

Galvanised
Aluminium
Powder Coating
Zincalume
Chromadeck

Product Features

- 🔊 Fire & Natural Day-to-Day Ventilation
- 🔊 Standard Fusible Link Operation
- 🔊 Continuous or Single Modules
- 🔊 Extremely Cost-Effective
- 🔊 Year product Guarantee
- 🔊 Suit Most Roof Profiles
- 🔊 Minimal Maintenance
- 🔊 Robust Construction