

# CURVE KING - S

## NATURAL STATIC SLOPE MOUNTED VENTILATORS

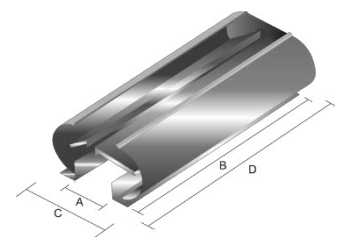
The Curvent Curve King – S is a slope mounted natural static ventilator. The patented curved sides enhance the co-efficient capabilities of the ventilator and provides appealing aesthetic. The Curvent Curve King will ventilate hot stale air within the building which is then replaced with cool fresh air through fixed louvres and other openings at low level, vastly improving working conditions and productivity. As an optional extra, a manual ground cable control system can operate winter dampers to shut ventilation.

The ventilator is designed to fit any roof profile. The ventilator is manufactured using Computerized Numeric Control machines, eliminating manufacturing flaws. The ventilator is transported in knock-down format to protect it against transit damage. The ventilator features a unique user friendly “Clip-On” installation system allowing fast and easy installation procedures that will reduce installation time and cost. This ventilator is renowned for its extremely robust construction. Its continuous natural ventilation capabilities and no maintenance makes it a cost-effective system to naturally ventilate any building. The flowing curved lines of the ventilator remains the first choice with architects, engineers and specifiers.

Slope Mounted Model Type	CK300S	CK450S	CK600S	CK750S
Aggregate Base Throat Area	0.6m <sup>2</sup>	0.9m <sup>2</sup>	1.2m <sup>2</sup>	1.5m <sup>2</sup>
Free Measured Throat Area (Av)	0.54m <sup>2</sup>	0.6m <sup>2</sup>	0.69m <sup>2</sup>	1.06m <sup>2</sup>
Aggregate Base Throat Dimensions (AxB) in mm	300W x 2000L	450W x 2000L	600W x 2000L	750W x 2000L
Overall Ventilator Dimensions (CxD) in mm	810W x 2120L	1010W x 2120L	1210W x 2120L	1530W x 2120L
Purlin Spacing Required in mm	2000	2000	2000	2000
Mild Steel Mass (Kg)	36	47	68	88

### SPECIFICATION PROCEDURE:

1. Select the Model in accordance with the ventilation requirements and roof purlin spacing
2. Select the ventilator material type (i.e. Aluminium, Chromadek or Galvanised)
3. Select any accessories required (i.e. Bird Guards, Burglar Bars)



### EXAMPLE:

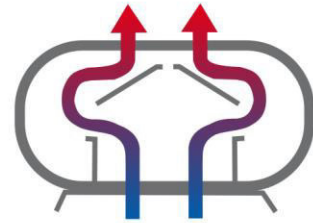
A specification for 6.9m<sup>2</sup> Free Measured Area (Av) natural ventilation required with 2000mm roof purlin spacing available at the apex of the roof, manufactured in Chromadek material, colour Fish Eagle White, with bird guards would be:

### CALCULATION:

Ventilation required + Free Measured Throat Area (Av) 6.9m<sup>2</sup> + 0.69m<sup>2</sup> (Av of the Curve King CK600S)  
 = 10 x Curvent Curve King type CK600S Ventilators  
 = 24m x Curvent Curve King type CK600RC Ventilators

### SPECIFICATION DESCRIPTION:

10 x Curvent Curve King type CK600S slope mounted natural static ventilators, Chromadek material, colour Fish Eagle White, with bird guards, installed in accordance with the manufacturers detailed installation specifications.



## Cost-effective system to naturally ventilate...

### Optional Accessories

Burglar Guards  
Bird Guards  
Roof Closures

### Product Material Finishes

Galvanised  
Aluminium  
Powder Paint  
Zincalume  
Stainless Steel  
Chromadek

### Product Features

- 🔌 Natural Day-To-Day Ventilation
- 🔌 1 Year Product Guarantee
- 🔌 Extremely Cost-Effective
- 🔌 Unique Clip-On System
- 🔌 Suit most Roof Profiles
- 🔌 Robust Construction
- 🔌 Superior Aesthetics
- 🔌 No Operating Cost
- 🔌 No Maintenance
- 🔌 1 Year Product Guarantee